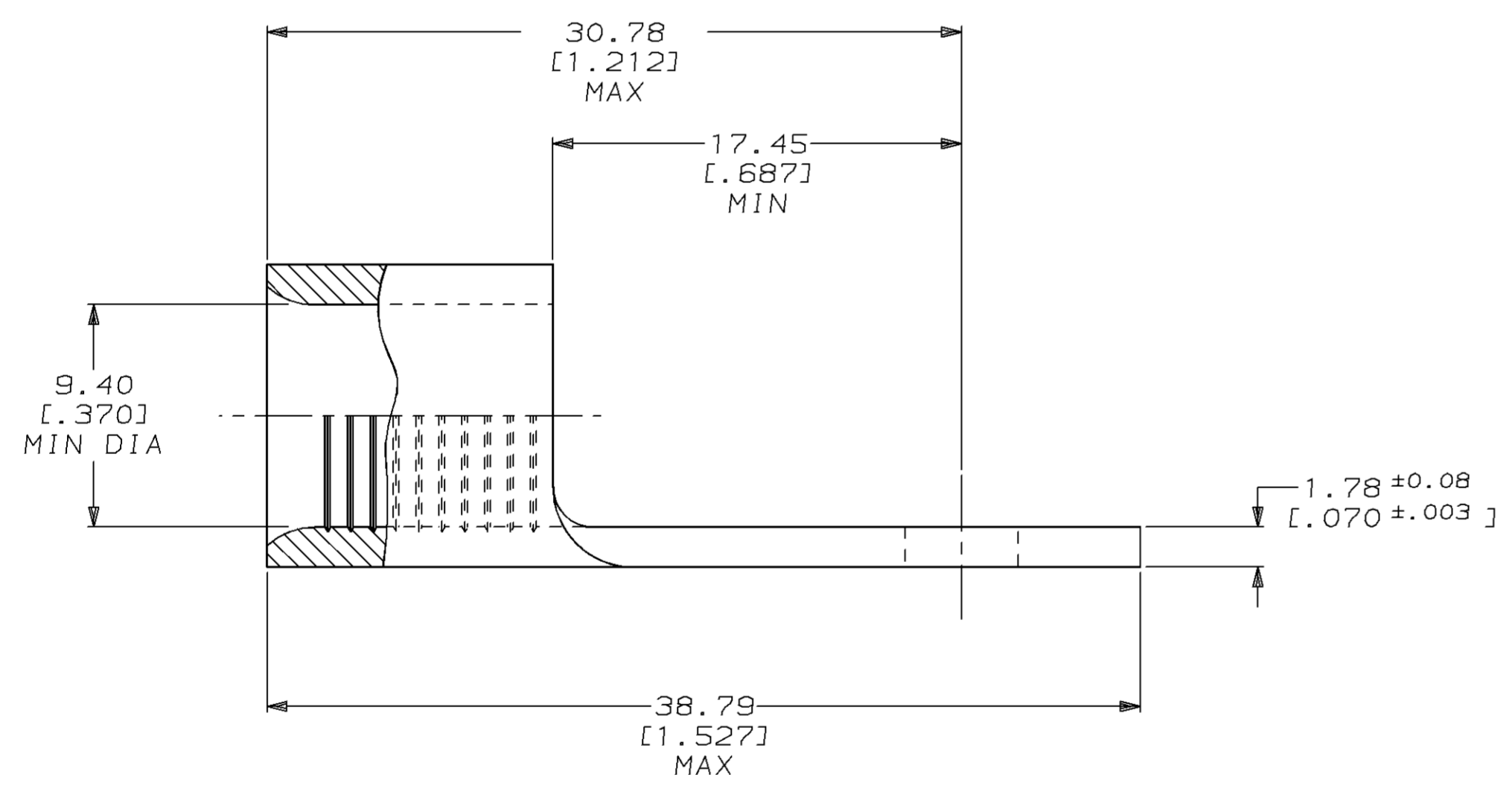
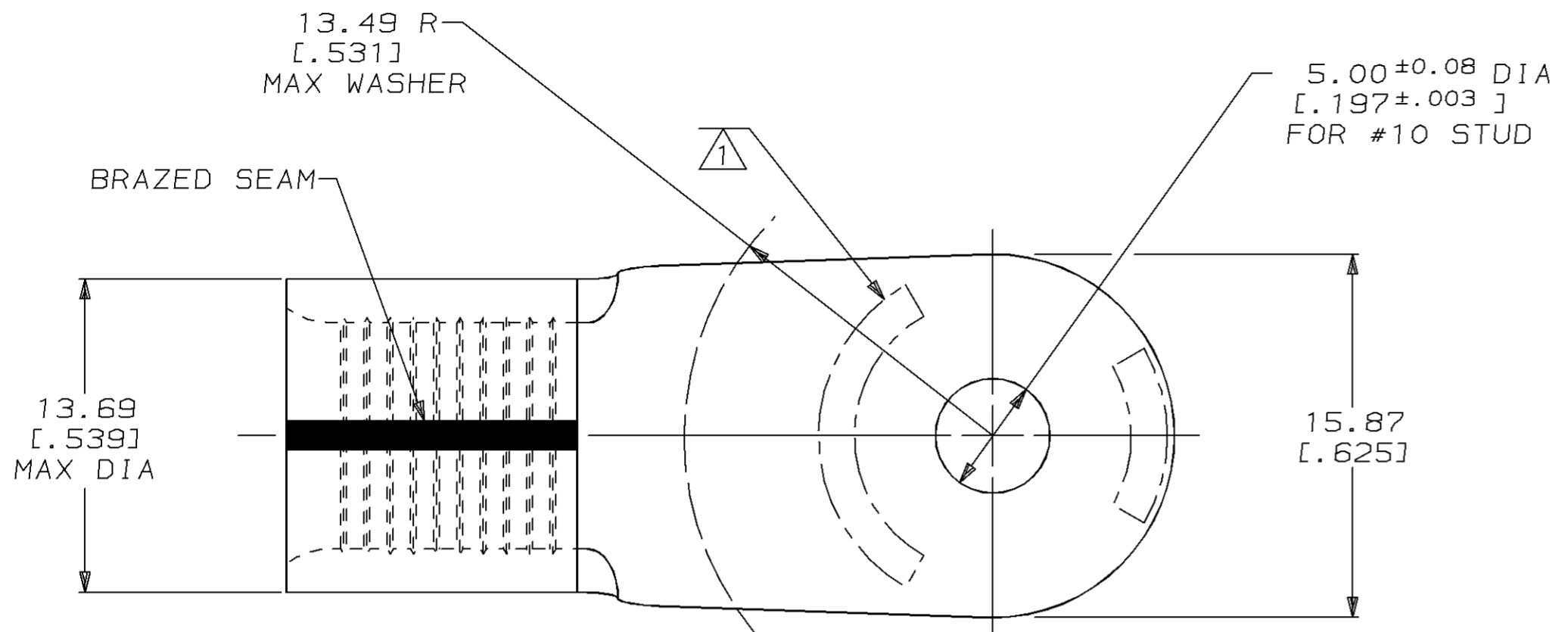


THIS DRAWING IS UNPUBLISHED. RELEASED FOR PUBLICATION, 19 .
 © COPYRIGHT 19 BY AMP INCORPORATED. ALL INTERNATIONAL RIGHTS RESERVED.

LOC	DIST	P	F	ZONE	LTR	DESCRIPTION	DATE	APPD
G	14					REVISED PER OL20-0045-97	24MAR97	OKS CHK

AMP WIRE RANGE	UL E13288 Listed
2 AWG SOLID OR STRANDED	2 AWG STRANDED
SR LR7189 Certified	MILITARY P/N AND CLASS
2 AWG SOLID OR STRANDED	MS 20659-146 CLASS 2 A

- 1** STAMP AMP 2W* 60-75 APPROX AS SHOWN
- 2** TIN PLATE 0.00254 [0.00100] MIN THK PER MIL-T-10727
- 3** GOLD PLATE 0.00127 [0.00050] MIN THK PER MIL-G-45204 OVER NICKEL PLATE 0.00076 [0.00030] MIN THK PER QQ-N-290



AMP INCORPORATED CUSTOMER SERVICE SYSTEMS		MAX RECOMMENDED OPERATING TEMPERATURE: SEE TABLE	DO NOT SCALE PRINT. UNLESS SPECIFIED DIMENSIONS IN mm [INCHES] TOLERANCES ON: 2 PLC DEC ± 0.20 [0.008] 3 PLC DEC ± - ANGLES ± -	DR 04AUG94 DK SCHRUM	260°C MAX 3 170°C MAX 2	330301-2 330301	
FOR ADDITIONAL PRODUCT INFORMATION OR COPIES OF DRAWINGS AND TECHNICAL DOCUMENTS	PRODUCT INFORMATION CENTER 1-800-522-6752	VOLTAGE RATING: NOT APPLICABLE	MATERIAL COPPER PER ASTM B-152 ANNEALED	CHK 08AUG94 AJ KAUFMAN	TEMPERATURE RATING	FINISH	PART NO
FOR APPLICATION TOOLING INFORMATION	TOOLING ASSISTANCE CENTER 1-800-722-1111	WIRE CROSS SECTIONAL AREA RANGE: 26.7-42.4mm² [52,600-83,700] CIR MILS SOLID OR STRANDED	FINISH SEE TABLE	APPD 08AUG94 RE ROSER	AMP AMP Incorporated Harrisburg, PA 17105-3608		
FOR ORDER ENTRY	1-800-526-5142	THIS DRAWING IS A CONTROLLED DOCUMENT FOR AMP INCORPORATED. IT IS SUBJECT TO CHANGE AND THE CONTROLLING ENGINEERING ORGANIZATION SHOULD BE CONTACTED FOR THE LATEST REVISION.		APPD 08AUG94 JL MECKLEY	NAME TERMINAL, RING TONGUE, SOLISTRAND™		
				PRODUCT SPEC -	SIZE C	CAGE CODE 00779	DRAWING NO C -330301
				APPLICATION SPEC -	SCALE 4:1	SHEET 1 OF 1	
				WEIGHT -	CUSTOMER DRAWING		